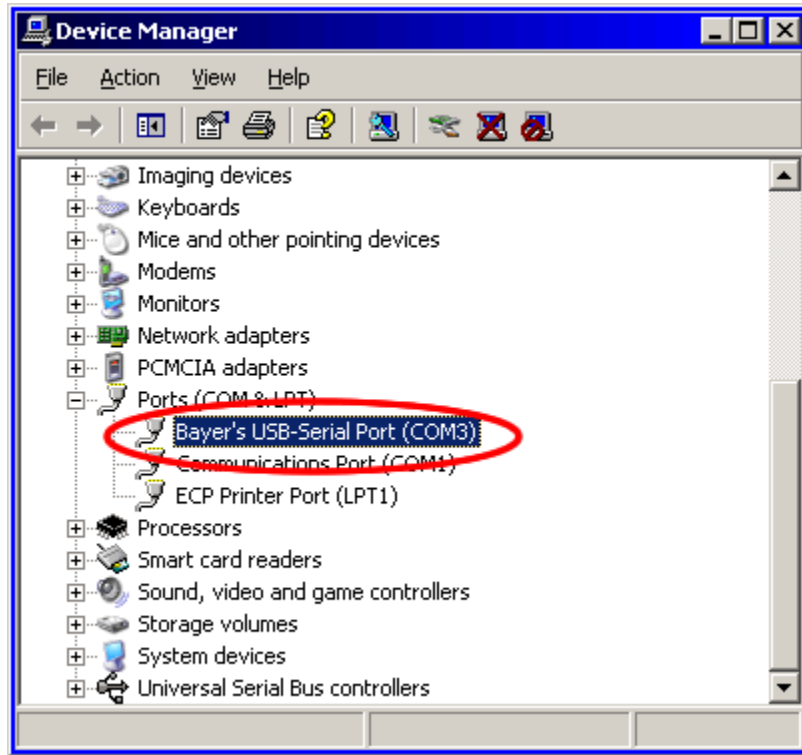
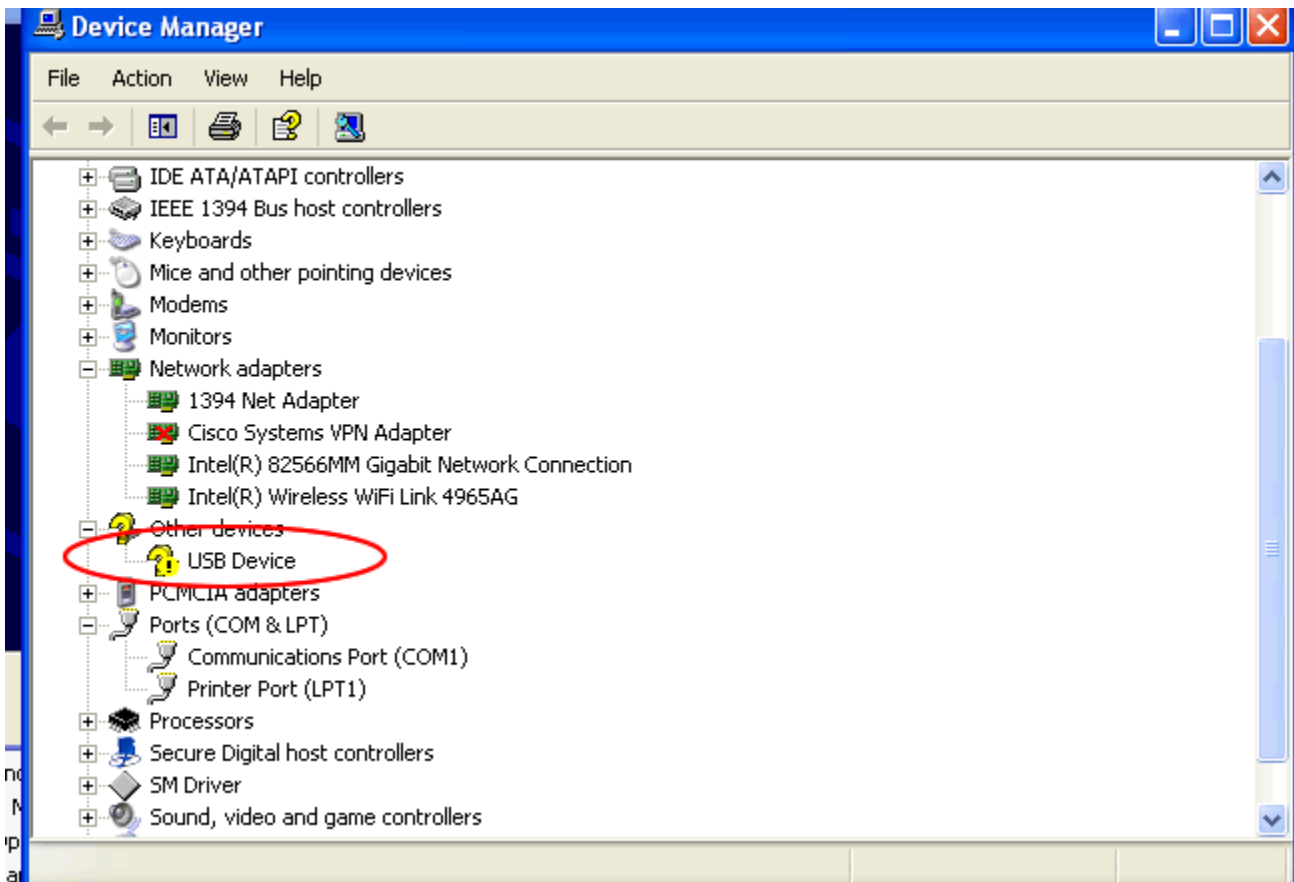


1. How To Install USB-Serial Cable Drivers for Windows XP and 2000

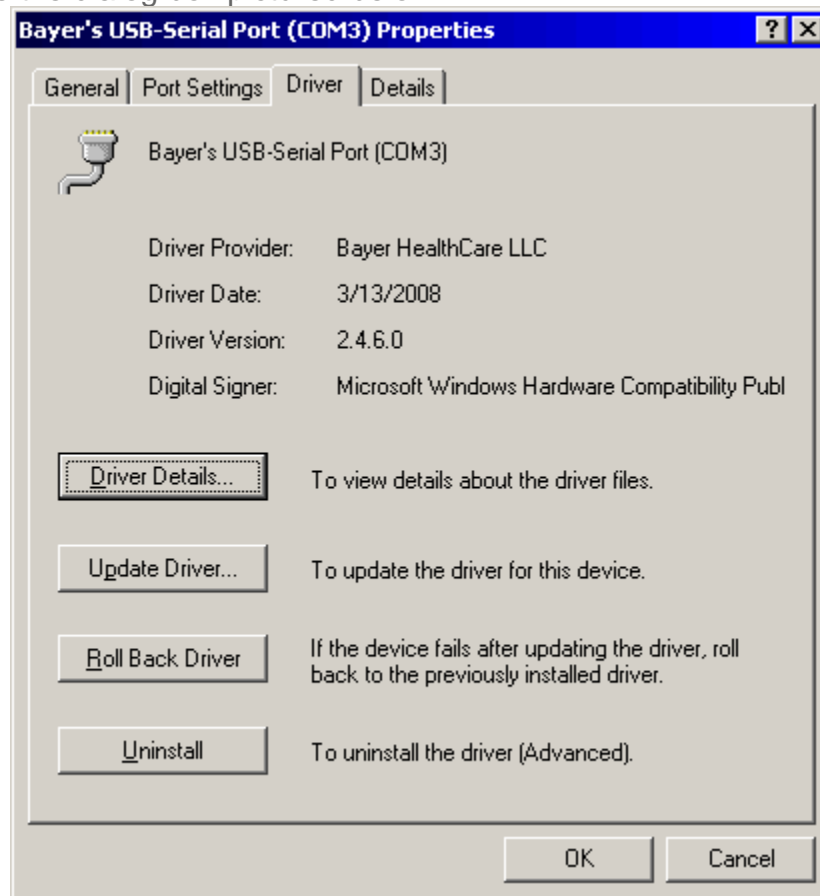
Instructions on How to Install USB-Serial Cable Drivers for Windows XP and 2000

Plug Bayer's USB Cable into your computer. If the Found New Hardware Wizard doesn't automatically open when Bayer's USB Cable is connected, from Device Manager, under the 'Ports (COM & LPT)' heading, double-click to select 'Bayer's USB-Serial Port (COM3)' or the USB device denoted with the exclamation point (if driver installation failed). See the following two windows below for examples.





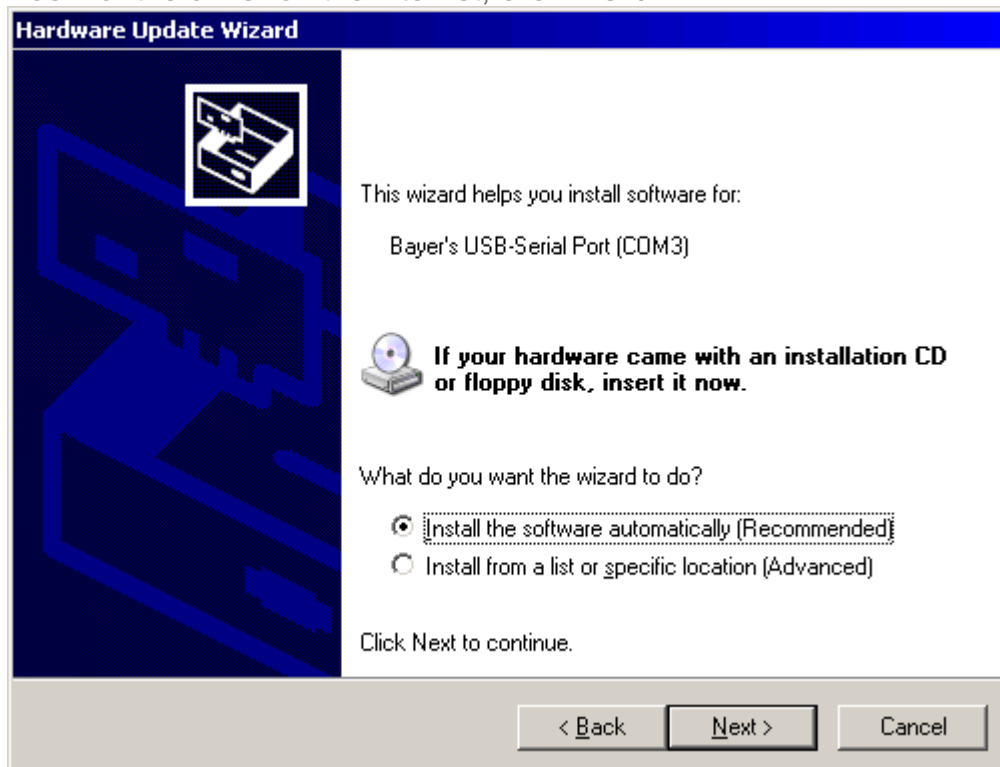
The Properties page for the device will appear on screen. From the Properties page select the "Driver" tab to receive the dialog box pictured below.



Select to 'Update Driver', the Windows 'Hardware Update Wizard' will appear.

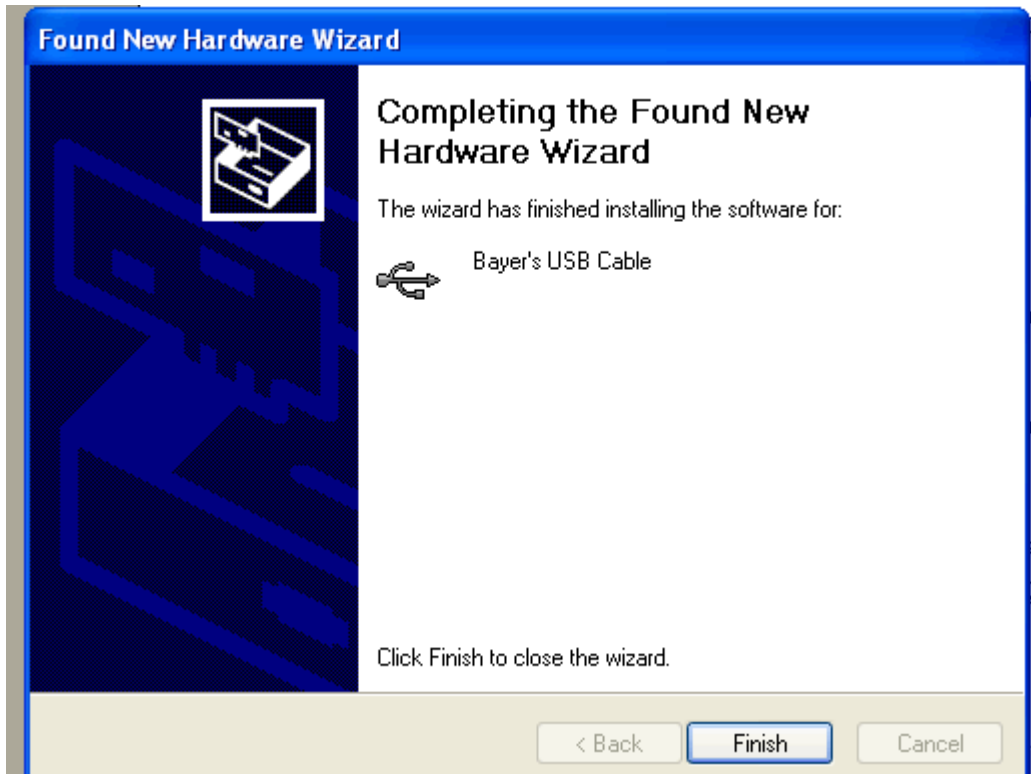


Choose to NOT look for the driver on the internet, click 'Next'



Choose to install from a specific location and select the location that the drivers.zip files were saved. Select 'Next'.

The following window opens.

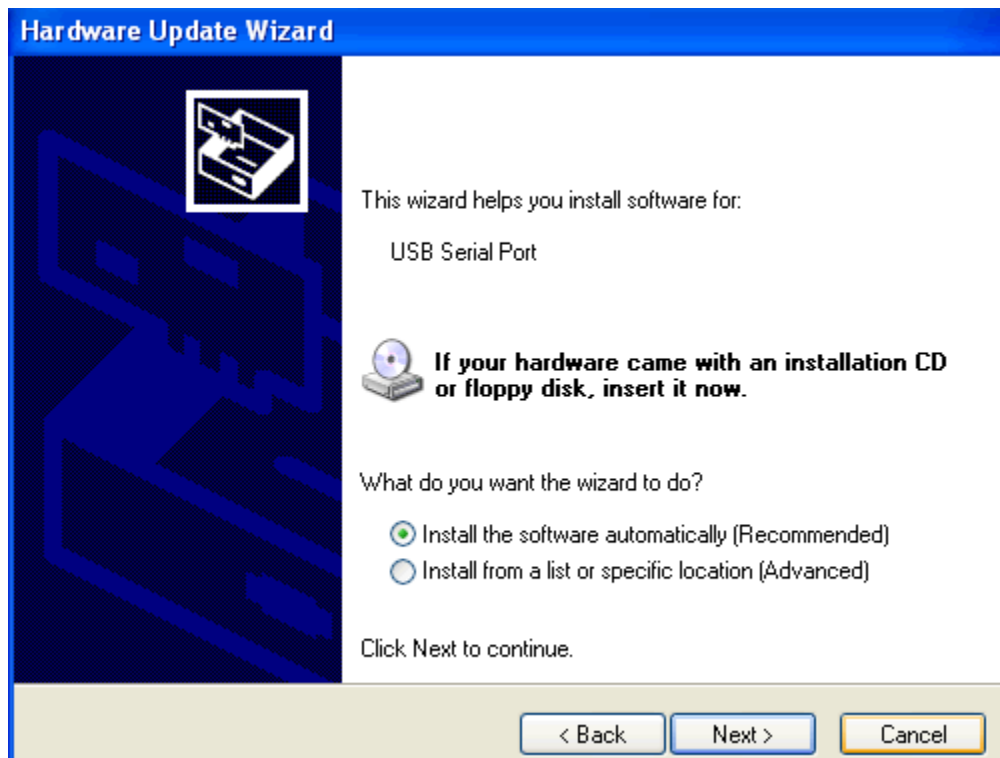


Click Finish.

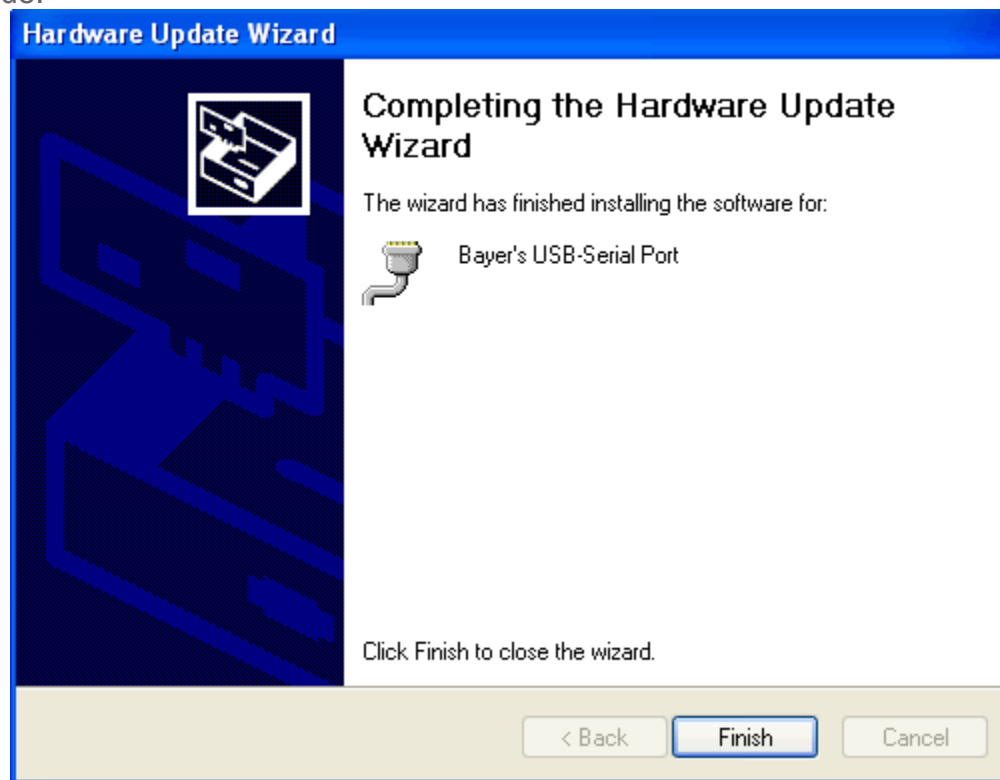
If both drivers need to be installed (USB and Serial), the following window should then automatically display:



Click 'Next' to continue. The following window should then display:



Select to Install from a specific location and select the location the drivers.zip files were saved. Click 'Next' to continue.



Click "Finish".